

V O L V O

# EX 40

PURE ELECTRIC





---

## INTRODUCING THE FULLY ELECTRIC VOLVO EX40, AN INTUITIVE AND VERSATILE SUV DESIGNED FOR LIVING LIFE TO THE FULLEST.

---

Created to inspire peace of mind on a busy day, the Volvo EX40 takes the pure-electric experience to a whole new level. The Sand Dune colour adds visual drama to every turn.

Each one of us plays a part, no matter how small, in preserving the beauty of the world we live in and the Volvo EX40 is made for every one of you.

Each time you go for a drive in this car, remember that you're also healing the planet.



# PIXEL TECHNOLOGY HEADLIGHTS

The EX40 introduces advanced Pixel Technology, an innovation that adapts headlamp light to reduce the risk of dazzling oncoming traffic.

# FRONT GRILL

---

A unique covered grill with a body-coloured border and insert, for a distinct front.

This design is possible because an electric car doesn't need as much air flow for cooling as a car with an internal combustion engine.

The covered grill together with the grill shutters helps lower the air resistance for a longer range.





---

# WHEELS

---

A sporty, aerodynamically designed alloy wheel is available for the EX40. Aerodynamic design helps lower air resistance.

5-Double Spoke Black Diamond Cut 48.26 cm (19") enhances the car's sporty character and distinct road presence.



# CONTRASTING BLACK ROOF

These design elements clearly distinguish the EX40 as an electrified, chargeable car.

The black roof, with its contrasting signature design element, further enhances the car's dynamic design.



# REAR DIFFUSER

The rear bumper with a high gloss black diffuser in a clean, uncluttered design connects to the sporty design expression.



---

# INTERIOR STYLING

---

## SPORTY INTERIOR DESIGN

The charcoal interior along with the charcoal headliner and backlight topography décor inlays put the driver at the centre of action.

The sporty seats are made of Charcoal Connect Suede textile. The carpets are made of recycled materials and are part of a sustainable product offer.





harman/kardon

---

# HARMAN KARDON PREMIUM SOUND

---

The EX40 is equipped with high-definition Harman Kardon Premium Sound.

With a 600W digital amplifier and 13 high-fidelity speakers, including a subwoofer, it delivers finely tuned surround sound, ensuring immersive listening without compromising on quality.

# LEATHER-FREE

This upholstery features Suede textile seat panels with contrasting Charcoal Connect Suede textile bolsters and inserts for a sportier look and feel.

Suede textile has excellent grip and natural ventilation, it's perfect for everyday life.

All the upholstery is leather free to ensure that every detail of the car is true to our sustainable vision.



# ALUMINIUM TREAD PLATES

Engraved "EX40" aluminium tread plates are fitted in the front door openings.



# TAILORED SPORT STEERING WHEEL

This leather-free three-spoke sport steering wheel is hand stitched and wrapped in a synthetic material with a luxurious touch. A stylish satin silk trim, glossy black decor and colour-coordinated stitching add to the finely crafted feel.





# INFOTAINMENT AND CONNECTIVITY

A CAR THAT CONNECTS WITH PEOPLE'S  
CONNECTED LIVES

A new infotainment and connectivity experience.

## **BENEFITS:**

- Google<sup>®</sup> integrated and Android powered infotainment system with Google Services<sup>®</sup>
- Command Google assistant with "Hey Google"
- Google Maps<sup>®</sup> navigation seamlessly embedded in the car interface
- Over-the-air in-car software updates
- Convenient Entry & Start
- Volvo Cars app services connected



# NEW GENERATION 31.24 CM (12.3 INCH) DRIVER INFORMATION DISPLAY (DIM)

- The 12.3 inch driver information display keeps the driver updated with all the essential driver information
- It has an entirely new graphic design and new functionalities that put the driver even more in focus
- Evolved layout and crisper high-resolution graphics for a modern intuitive appearance
- Regeneration, power capacity and energy level are shown in real time
- Two driver display modes showing different levels of information: Calm and Navi



## 22.86 CM (9-INCH) CENTRE DISPLAY WITH TOUCHSCREEN

- Volvo EX40 wants to make driving as intuitive and easy as possible
- Instead of overwhelming you with multiple physical buttons, Volvo Cars offers a single vertical 22.86 cm (9-inch) center display with touch controls
- The display is developed together with Google

### **BENEFITS:**

- Google Maps helps with real-time traffic info
- Google Assistant voice control
- Glance View that allows the driver to quickly see the charging progress from outside the car



# 360 DEGREE CAMERA

The EX40 takes parking assistance further with a 360° camera. Activating all parking cameras, it provides a comprehensive view of the car's surroundings on the central display, enhancing low-speed manoeuvring. Each camera view can be selected individually for precise control, either automatically or manually.



# LOAD AND VERSATILITY

The Volvo EX40 is practical and easy to load with lots of useful and clever storage solutions that make life easy.



# SPLIT FOLDING REAR BACKREST

- The rear backrest is folding and split in the proportions 60/40
- Each part of the backrest can be individually folded via a release handle on top of backrest



# FLAT LOAD SURFACE

When one or both parts of the rear backrest are folded they leave a flat load surface.





# ROOMY STORAGE COMPARTMENT

## FOLDING/REMOVABLE LOAD FLOOR SHOPPING BAG HOLDER

- There is a spacious storage compartment under the load compartment floor
- Practical for transporting shopping bags, without the risk of them falling over

## FOLDING, DETACHABLE PARCEL SHELF

- A folding and detachable parcel shelf that covers the load compartment is standard
- Items in the load compartment are not visible from the outside



# FRONT LOAD

## COMPARTMENT “FRUNK”

- The frunk is a front load compartment, unique for the pure electric Volvo EX40
- Load space of 31 liters
- The main aim is to provide extra space for gear which you don't often use, such as charging cables, first-aid kit, etc.
- There's a distance of 150-200 mm between the hood and the upper part of the frunk, allowing pedestrian protection

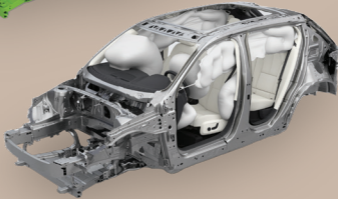
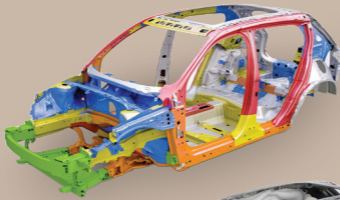
## NEW ADAS SYSTEM



# ADVANCED DRIVER ASSIST SYSTEM SENSOR

## INCLUDES THE FOLLOWING FEATURES

- Collision avoidance and mitigation by braking and steering
- Run-off Road Mitigation
- Forward Collision Warning Lane Keeping Aid
- Post Impact Braking
- Driver Alert Control
- Cruise Control
- Speed Limiter



# UPGRADED BODY STRUCTURE

- At the front, the car features totally redesigned and reinforced lower crash beams that mitigate collision forces
- In a frontal offset collision, a new innovative wedge design distributes the collision forces over a larger area to further help reduce the effects
- In a rear collision, the rear electric powertrain is integrated in the body structure to help distribute the collision forces away from the cabin and reduce the strain on the occupants

# PURE ELECTRIC

The smooth, powerful electric powertrain of the all-new EX40 is at the heart of its driving experience.

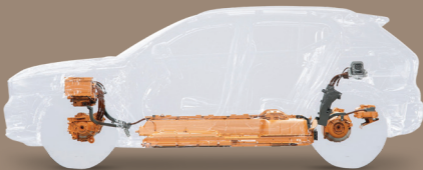
- Total horsepower of 238 hp
- Instant torque of 420 Nm
- 11 kW On Board charger

A large, state-of-the-art lithium-ion high-voltage battery provides a very low centre of gravity for high driving.



# BATTERY SAFETY CAGE

- The large, high-voltage battery is safely embedded in the middle of the car's body structure
- In the event of a collision, this helps keep it out of harm's way and to help provide additional protection, we've created a unique safety cage for it.



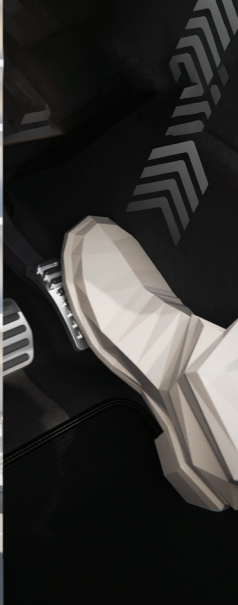


---

## SHIFT-BY-WIRE SINGLE SPEED TRANSMISSION

---

The two electric motors of the EX40 twin-drive wheels through a single speed transmission. There are no gear changes, just Drive, Neutral and Reverse. Shift-by-wire technology means that the connection between the gear shifter and automatic gearbox is completely electronic, instead of mechanical, making it easier to operate.



# ONE PEDAL DRIVE (REGENERATIVE BRAKING)

- Just by lifting the pedal the driver can slow the car all the way to a standstill without having to use the brake pedal when "ON"
- "OFF" means less regeneration is performed when lifting the accelerator

## **HOLD AND AUTO HOLD**

- When at an incline, the autohold function applies automatically
- This can be activated manually by using the brake pedal or P-button





## HOW TO CHARGE THE BATTERY

Charging is easy. The connector for AC and DC charging is located under a lid at the car's left rear side.

When charging via a wall-box or at a charging station, just plug the cable in the car's charging port and a light around the charging port will confirm charging is in progress, it will shift from a steady yellow to blinking green.

Charging time is dependent on many factors from the electric setup at the charging station, to the battery temperature to the charging levels of the car.

It takes around 28 minutes to fast charge from 10% to 80%\*

\*\*Fast Charging DC upto 150 KW under optimal charging conditions. Charging times can vary and are dependent on factors such as outdoor temperature, current battery temperature, charging equipment, battery condition and car condition. Charging times and speed may vary with other charging options significantly-subject to conditions specified above.

# 11 KW ON BOARD CHARGER (OBC)

- The battery current is DC, but the household current is AC
- Therefore, the car uses a powerful 11kW OBC that transforms AC to DC



## BATTERY CHARGING

- The battery can be charged using the car's 11 kW\*\*\* On Board charger via Mode 2 or Mode 3 cable for AC current 3-phase and using fast charged DC stations up to 150 kW
- The actual charging level is clearly shown in the driver's display and in the Volvo Cars app
- Here the driver can also see the estimated time when the battery is fully charged at the level set by the driver. This can also be seen from outside the car

# VOLVO EX40 COLOUR RANGE



SAND DUNE



ONYX BLACK



CRYSTAL WHITE



SAGE GREEN



FJORD BLUE



CLOUD BLUE



UPHOLSTERIES



Charcoal Connect Suede textile/Microtech in Charcoal interior (R980)



Charcoal Connect Suede Textile/Microtech in Fjord Blue interior (Y980)



Dawn Fusion Microtech/Textile in Charcoal interior (RND0)

INLAYS



Topography Decor Inlays

MY25 EX40 SINGLE MOTOR SPECIFICATION SHEET

Engine variant	E60
<b>Technical Data</b>	
Battery electric vehicle	S
Battery capacity, gross (kWh)	69
Max output in hp	238 hp
Max torque in Nm	420 Nm
1EDT, Electric Drive Train, 1 speed transmission	S
Rear Wheel Drive	S
Acceleration, 0-100 km/h	7.3 Sec
Max range (as per WLTP)	475 Kms
Speed limit 180 km/h	S
<b>Climate</b>	
Electronic Climate Control (2 zone)	S
CleanZone (Air Purifier)	S
Humidity sensor	S
Panoramic sunroof with power operation	S
<b>Locking and security systems</b>	
Alarm	S
Interior motion sensor for alarm	S
Inclination sensor for alarm	S
Key remote control	S
Keyless entry	S
Central lock switch with diode in front doors	S
Tempered glass, side & rear windows	S
<b>Instrumentation</b>	
31.24 cms (12.3 inch) Driver display	S
<b>Seats</b>	
5 seater	S
Suede textile/Microtech upholstery	S
Power adjustable drivers seat with memory	S
Power adjustable passengers seat	S
4 way power adjustable lumbar support	S
Mechanical Cushion Extension, Front Seats	S
Mechanical release fold 2 <sup>nd</sup> row rear seat	S
Power foldable rear headrests from centre stack display	S
Centre armrest with cupholders	S
<b>Interior</b>	
Decor 'TOPOGRAPHY'/Back lit decor	S
Illuminated vanity mirrors in sunvisor LH / RH side	S
Artificial leather steering wheel with Uni deco inlay, 3 spoke, Sport	S
Gearlever knob	S
Automatically dimmed inner and exterior mirrors	S
Charcoal insert colour interior (R980)	S
Sky Blue insert colour interior (Y980)	S
Carpet kit, textile	S
Front tread plates, metal Recharge	S
Interior illumination high level	S
Parking ticket holder	S
Glovebox curry hook	S
Waste bin in front of armrest	S
Tunnel console High gloss Black	S
Ash tray lid	S
Charcoal roof colour interior	S

<b>Luggage compartment</b>	
Temporary sparewheel	S
Jack	S
Power operated tailgate	S
Foldable floor hatches with grocery bag holder	S
First-aid kit	S
Warning triangle	S
Luggage space in front	S
<b>Exterior</b>	
Roof rails integrated Glossy black	S
BEV grill, colour coordinated / covered mesh	S
High-gloss black decor side windows	S
Handle side door body color, keyless and illumination	S
Black rear view mirror covers	S
Retractable rear view mirrors	S
Pixel Technology headlights	S
EBL, Flashing Brake Light and Hazard Warning	S
C-Pillar Recharge Moulding	S
<b>Support Systems</b>	
Adaptive Cruise Control	S
Collision Mitigation Support, front	S
Lane Keeping Aid	S
Blind Spot Information System with Cross traffic alert	S
Collision Mitigation Support, rear	S
360° Camera	S
Parking assistance sensors: front, rear & side	S
Personal settings, power steering	S
Hill start assist	S
Rain sensor	S
Hill Descent Control	S
<b>Charge Connector / Cord</b>	
Connector, EU type+ quickcharge	S
Cord, Plug M, Type 2, Mode 2	S
<b>Safety</b>	
Airbag, Driver & Passenger	S
Knee airbag driver side	S
SIPS Airbags	S
Inflatable Curtains	S
Whiplash protection, front seats	S
Belt minder all seats, EU logic	S
Pyrotechnical pretensioners, front / rear outer positions	S
Cut-off Switch Passenger AirBag	S
Isofix - outer position rear seat	S
<b>Audio, Navigation &amp; Tele</b>	
Harman Kardon Sound System	S
Remote control buttons in steering wheel	S
22.86 cms (9 inch) Centre Display with touch screen	S
2 USB Type-C Connectors, Front	S
Bluetooth connection	S
Digital Service pack	S
Android based Google assisted infotainment system	S
Volvo On Call	S
With Telematic CA module	S
Apple Carplay with wire	S
Speech function	S
Inductive charging for smartphone	S
<b>Chassis</b>	
Chassis, Touring	S
Front Brake discs 45.72 cms (18 inch)	S
Rear Brake discs 45.72 cms (18 inch)	S
<b>Wheels</b>	
48.26 cms (19 inch) 5 Spoke Black Diamond-cut alloy wheel	S
235/50R19	S
255/45R19 (Rear)	S
Pirelli V3	S
Plastic protection cap	S
Indirect Tire Pressure Monitoring System	S

## VOLVO EX40

EXTERIOR COLOURS, TRIM LEVEL, UPHOLSTERY AND ALLOY WHEEL



707 - CRYSTAL WHITE



717 - ONYX BLACK



626 - CLOUD BLUE



733 - SAGE GREEN



734 - FJORD BLUE



743 - SAND DUNE



48.26 cms (19 inch)  
5-Spoke Black Diamond Cut Alloy